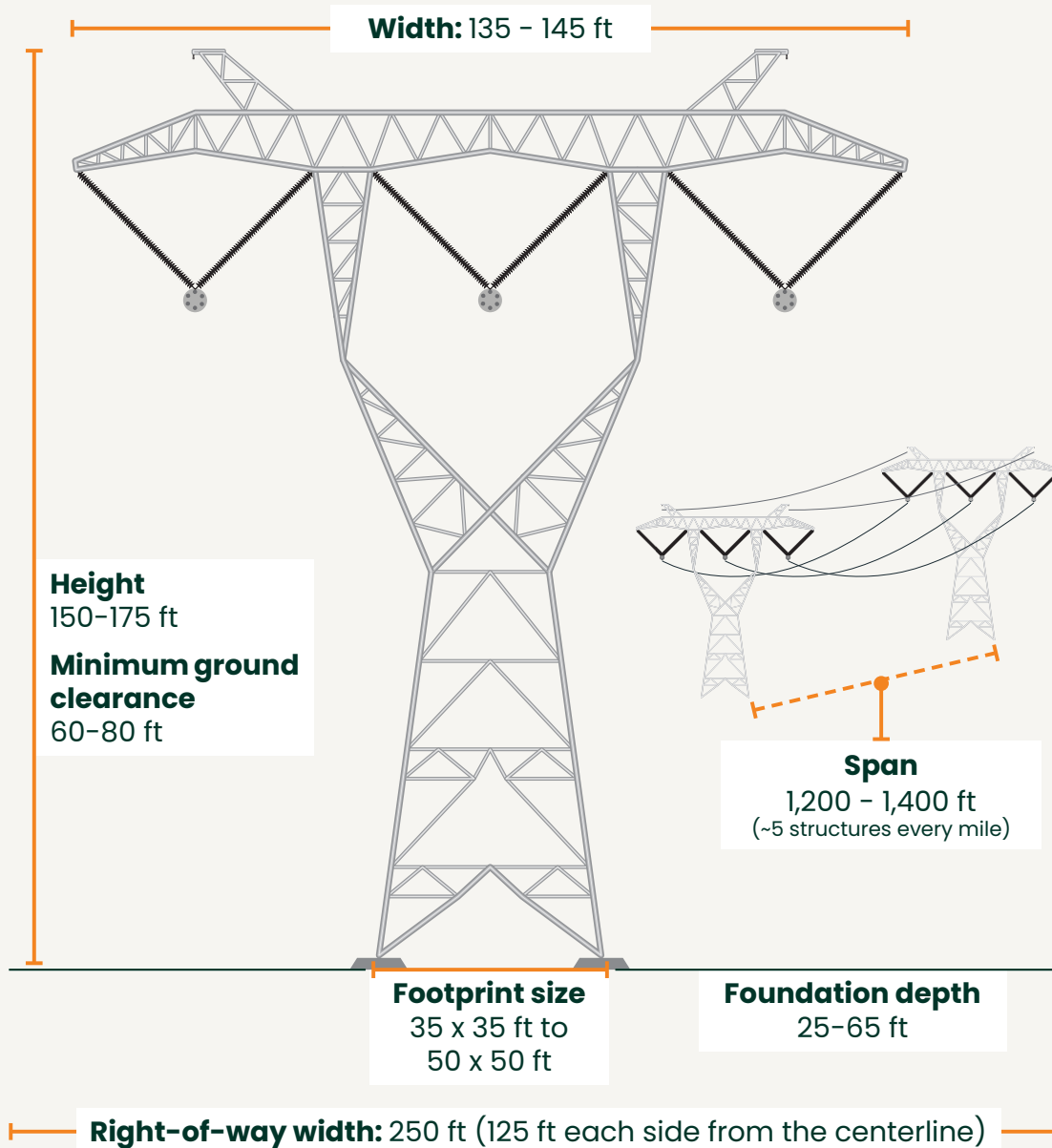


765 kV structure



Transmission structures play a vital role in the delivery of electricity. They support the components that are used to transport electricity. PowerOn Midwest is working with landowners and the community to power our region today and into the future.

Typical structure



Why 765 kV technology?

765 kV technology was identified in the planning process as the preferred solution for the region, presenting several advantages:



Efficiently carries power over long distances



Fewer transmission lines needed to carry the same amount of power



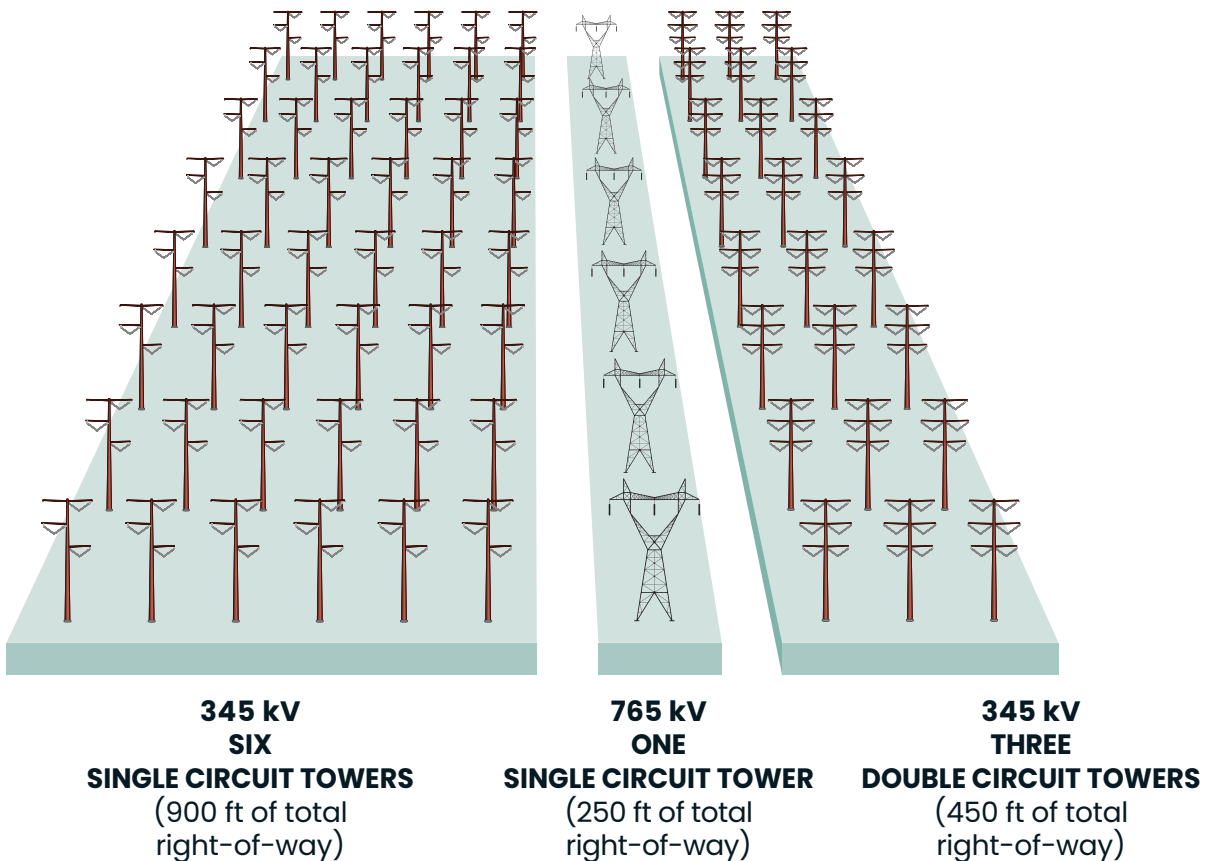
Fewer structures reduce impact on land, communities, and the environment



Resilient infrastructure that can consistently deliver power



Provides backup power pathways



**Not to scale.*