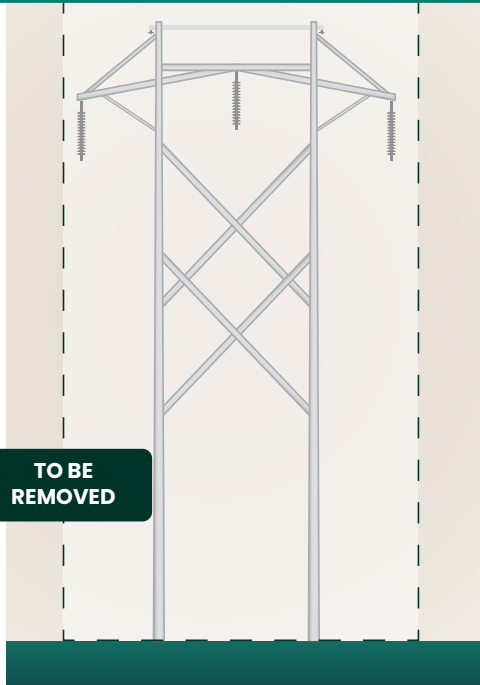


# 345 kV structures

Transmission structures play a vital role in the delivery of electricity. They support the components that are used to transport electricity. PowerOn Midwest is working with landowners and the community to power our region today and into the future.

## Existing typical wood and steel H-frame structures (single circuit)



**HEIGHT**  
70-110 ft

**WIDTH**  
54 ft

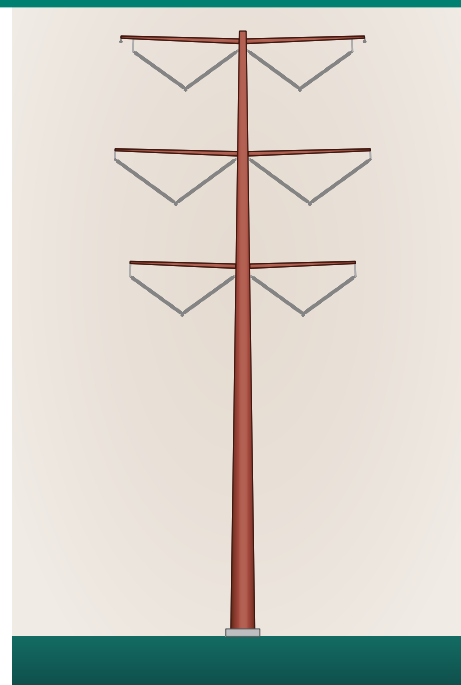
**SPAN**  
400-1,000 ft

**MINIMUM GROUND CLEARANCE**  
26-38 ft

**FOUNDATION DEPTH**  
Varies

**RIGHT-OF-WAY WIDTH**  
150 ft

## Preliminary typical structure (double circuit)



**HEIGHT**  
90-160 ft

**WIDTH**  
14-50 ft

**SPAN**  
800-1,200 ft

**MINIMUM GROUND CLEARANCE**  
26-38 ft

**FOUNDATION DEPTH**  
30-40 ft

**RIGHT-OF-WAY WIDTH**  
150 ft